



PRODUCT UPDATE

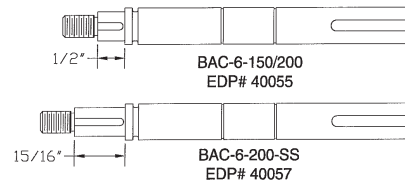
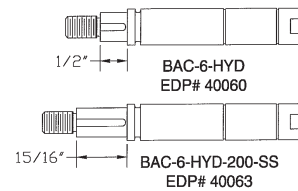
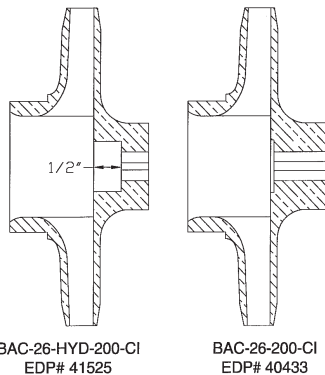
Number 11
Revision 1

EXTENDED IMPELLER ATTACHMENT

The change affects pump models FMC-200, FMC-200-HYD-210, FMC-200-HYD-304, and FMC-200-HYD-310. The length of impeller engagement to the shaft has been extended to further strengthen the impeller attachment to the shaft. The lengthened attachment allows for higher torque loads to be transferred to the impeller. The length of impeller contact with the shaft has been increased from 1/2" to 15/16".

The change will be effective on pumps shipped after November 1998. Pumps with the new shaft, key, and impeller can be identified by looking inside the 2" suction port. A 1/2" deep countersink in the impeller at the nut identifies the old style attachment. If the nut is only slightly countersunk the pump is equipped with the new style shaft and impeller.

The new parts associated with this change are pictured below. The new shaft, key, and impeller must be used in combination and will not work properly if mixed with older parts. The new style shaft and impeller will fit in all Ace counterclockwise rotation 200 Series pumps both past and present.



NEW PART		REPLACES		ON PUMP MODELS
BAC-26-200-CI IMPELLER	40433	BAC-26-HYD-200-CI	41525	FMC-200 FMC-200-HYD Series
BAC-6-HYD-200-SS SHAFT	40063	BAC-6-HYD BAC-6-HYD-SS	40060 40061	FMC-200-HYD Series
BAC-6-200-SS SHAFT	40057	BAC-6-150/200 BAC-6-150/200-SS	40055 40056	FMC-200
BAC-25 KEY	40425	BACH-25	40420	FMC-200 FMC-200-HYD Series